

# Market Overview

As of 8/31/2017

## Asset Class Leadership

Periodic Table

Best ↑          ↓ Worst	EM 39.42	US Agg 5.24	EM 78.51	2000G 29.09	US Agg 7.84	All REITs 20.14	2000G 43.30	All REITs 27.15	1000G 5.67	2000V 31.74	EM 28.29
	ACWlxUS 16.65	HY Corp -26.16	HY Corp 58.21	All REITs 27.58	All REITs 7.28	EM 18.22	2000V 34.52	SP500 13.69	All REITs 2.29	1000V 17.34	1000G 19.17
	1000G 11.81	2000V -28.92	ACWlxUS 41.45	2000V 24.50	HY Corp 4.98	2000V 18.05	1000G 33.48	1000V 13.45	SP500 1.38	HY Corp 17.13	ACWlxUS 18.92
	2000G 7.05	1000V -36.85	1000G 37.21	EM 18.88	1000G 2.64	1000V 17.51	1000V 32.53	1000G 13.05	US Agg 0.55	SP500 11.96	SP500 11.93
	US Agg 6.97	SP500 -37.00	2000G 34.47	1000G 16.71	SP500 2.11	ACWlxUS 16.83	SP500 32.39	US Agg 5.97	2000G -1.38	2000G 11.32	2000G 10.78
	SP500 5.49	All REITs -37.34	All REITs 27.45	1000V 15.51	1000V 0.39	SP500 16.00	ACWlxUS 15.29	2000G 5.60	1000V -3.83	EM 11.19	All REITs 7.36
	HY Corp 1.87	1000G -38.44	SP500 26.46	HY Corp 15.12	2000G -2.91	HY Corp 15.81	HY Corp 7.44	2000V 4.22	HY Corp -4.47	All REITs 9.28	HY Corp 6.05
	1000V -0.17	2000G -38.54	2000V 20.58	SP500 15.06	2000V -5.50	1000G 15.26	All REITs 3.21	HY Corp 2.45	ACWlxUS -5.66	1000G 7.08	1000V 4.81
	2000V -9.78	ACWlxUS -45.53	1000V 19.69	ACWlxUS 11.15	ACWlxUS -13.71	2000G 14.59	US Agg -2.02	EM -2.19	2000V -7.47	ACWlxUS 4.50	US Agg 3.64
	All REITs -17.83	EM -53.33	US Agg 5.93	US Agg 6.54	EM -18.42	US Agg 4.21	EM -2.60	ACWlxUS -3.87	EM -14.92	US Agg 2.65	2000V -1.31
	2007	2008	2009	2010	2011	2012	2013	2014	2015	2016	YTD

# Market Overview

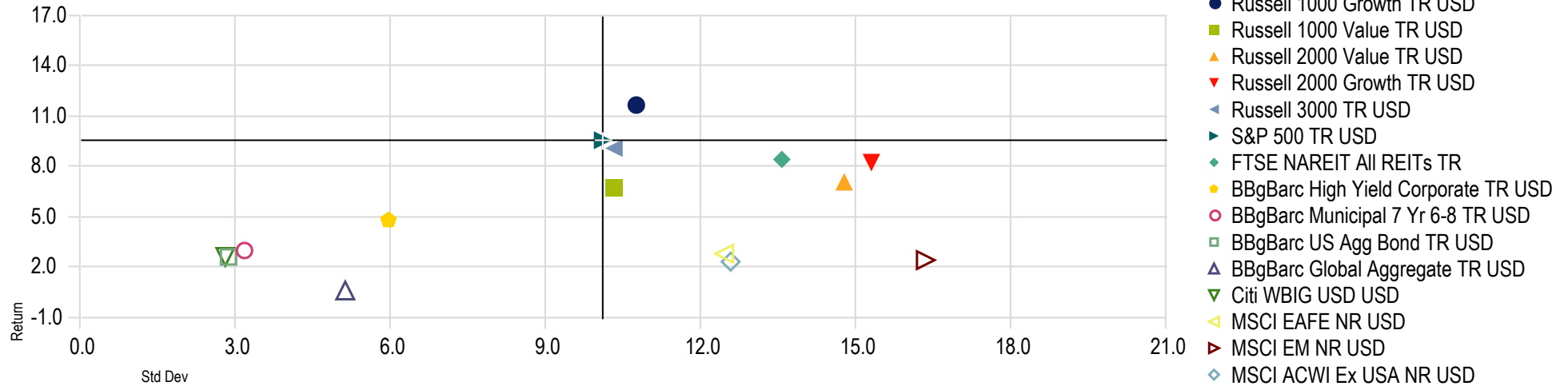
As of 8/31/2017

## Financial Market Snapshot

### Risk-Reward - 3 Years

Time Period: 9/1/2014 to 8/31/2017

Calculation Benchmark: None



### Performance Reporting

As of Date: 8/31/2017

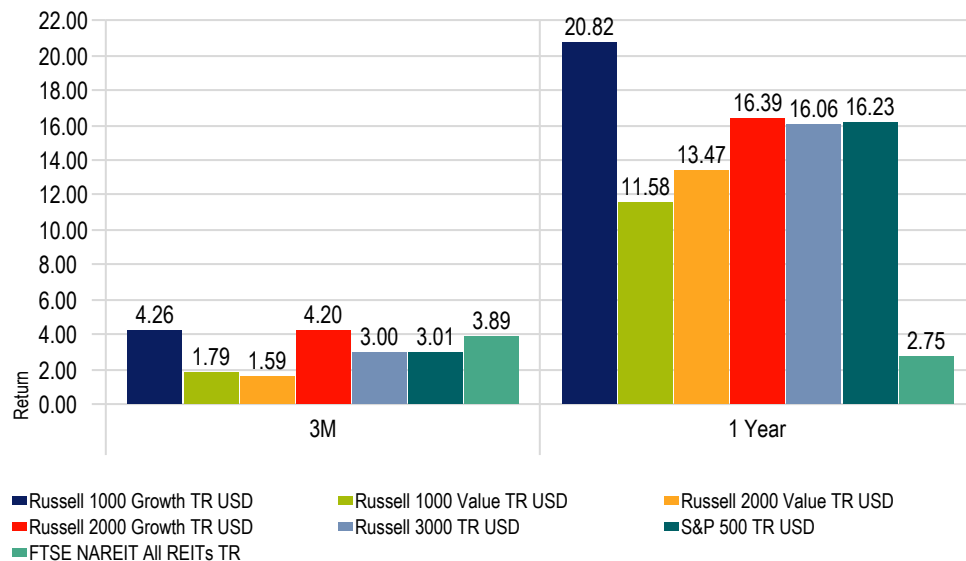
	Return						
	1M	3M	YTD	1 Year	3 Years	5 Years	10 Years
<b>Not Classified</b>							
Russell 1000 Growth TR USD	1.83	4.26	19.17	20.82	11.67	15.41	9.39
Russell 1000 Value TR USD	-1.16	1.79	4.81	11.58	6.74	13.25	5.96
Russell 2000 Value TR USD	-2.46	1.59	-1.31	13.47	7.07	12.51	6.46
Russell 2000 Growth TR USD	-0.12	4.20	10.78	16.39	8.20	13.75	8.21
Russell 3000 TR USD	0.19	3.00	11.20	16.06	9.08	14.27	7.70
S&P 500 TR USD	0.31	3.01	11.93	16.23	9.54	14.34	7.61
FTSE NAREIT All REITs TR	0.62	3.89	7.36	2.75	8.39	9.79	6.62
BBgBarc High Yield Corporate TR USD	-0.04	1.20	6.05	8.63	4.77	6.47	8.02
BBgBarc Municipal 7 Yr 6-8 TR USD	0.69	1.11	5.55	1.53	2.98	2.90	4.73
BBgBarc US Agg Bond TR USD	0.90	1.23	3.64	0.49	2.64	2.19	4.40
BBgBarc Global Aggregate TR USD	0.99	2.60	7.22	0.19	0.65	0.91	3.63
Citi WBIG USD USD	0.83	1.15	3.57	0.41	2.60	2.12	4.40
MSCI EAFE NR USD	-0.04	2.66	17.05	17.64	2.83	8.48	1.62
MSCI EM NR USD	2.23	9.42	28.29	24.53	2.38	5.30	2.43
MSCI ACWI Ex USA NR USD	0.52	4.55	18.92	18.88	2.36	7.36	1.74

Source: Morningstar Direct

## US Equity Snapshot

### Returns

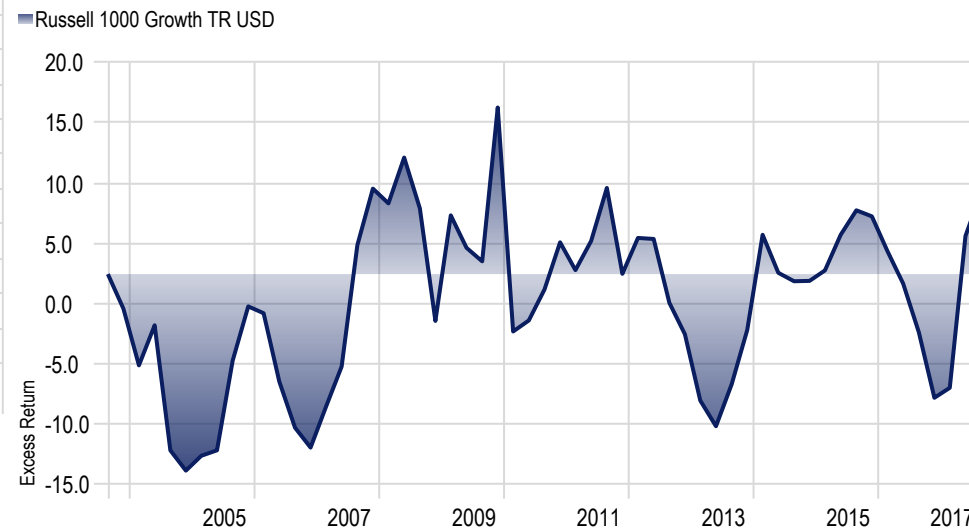
As of Date: 8/31/2017



### Rolling Returns - 15 Years

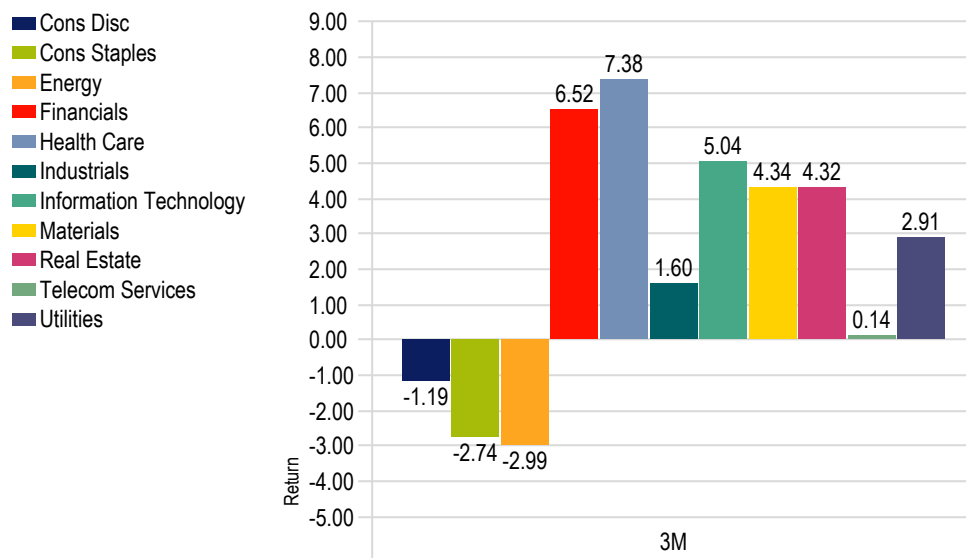
Time Period: 9/1/2002 to 8/31/2017

Rolling Window: 1 Year 3 Months shift Calculation Benchmark: Russell 1000 Value TR USD



### S&P 500 GICS Sectors

As of Date: 8/31/2017



### S&P 500 GICS Sectors

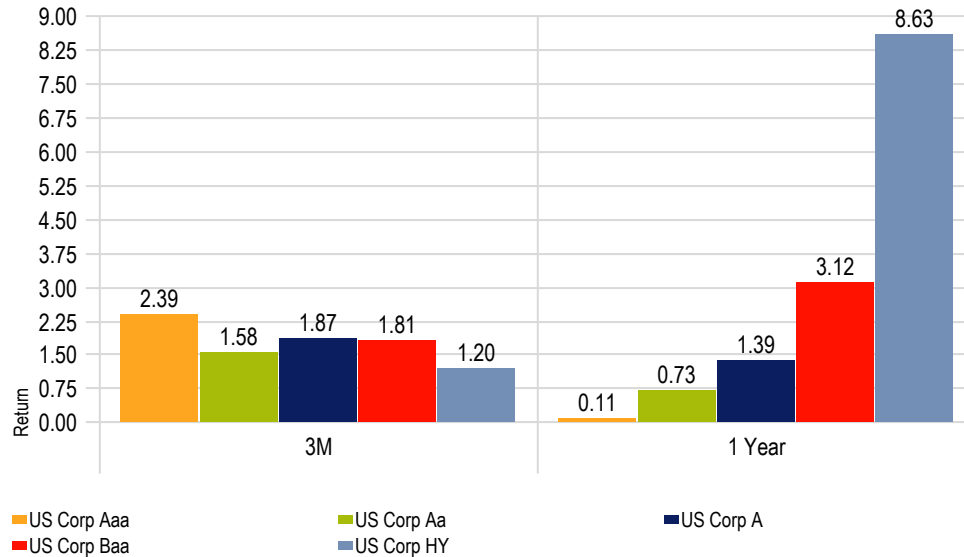
Data Point: Return

	1M	3M	YTD	1 Year	3 Years	5 Years	10 Years
Cons Disc	-1.84	-1.19	11.00	13.22	11.07	16.47	11.09
Cons Staples	-1.06	-2.74	7.49	3.78	9.53	11.99	10.37
Energy	-5.18	-2.99	-15.07	-6.09	-11.02	-0.22	0.83
Financials	-1.61	6.52	6.98	26.02	11.38	17.23	1.06
Health Care	1.85	7.38	19.13	13.78	10.18	17.98	11.07
Industrials	0.15	1.60	9.74	17.52	10.32	15.69	7.56
Information Technology	3.47	5.04	26.56	31.19	16.85	17.58	11.29
Materials	0.89	4.34	11.88	15.68	4.97	11.36	5.91
Real Estate	1.14	4.32	8.90	2.70	8.40	9.85	6.11
Telecom Services	-3.02	0.14	-7.93	-4.42	4.20	5.70	4.25
Utilities	3.25	2.91	15.03	15.64	12.24	12.81	7.74

## Fixed Income Snapshot

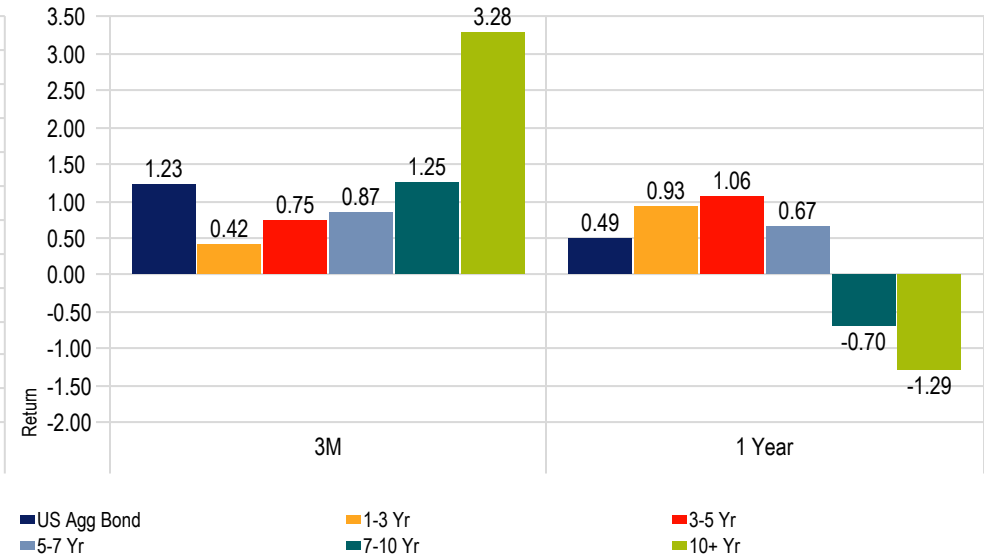
### Bond Index Quality

As of Date: 8/31/2017



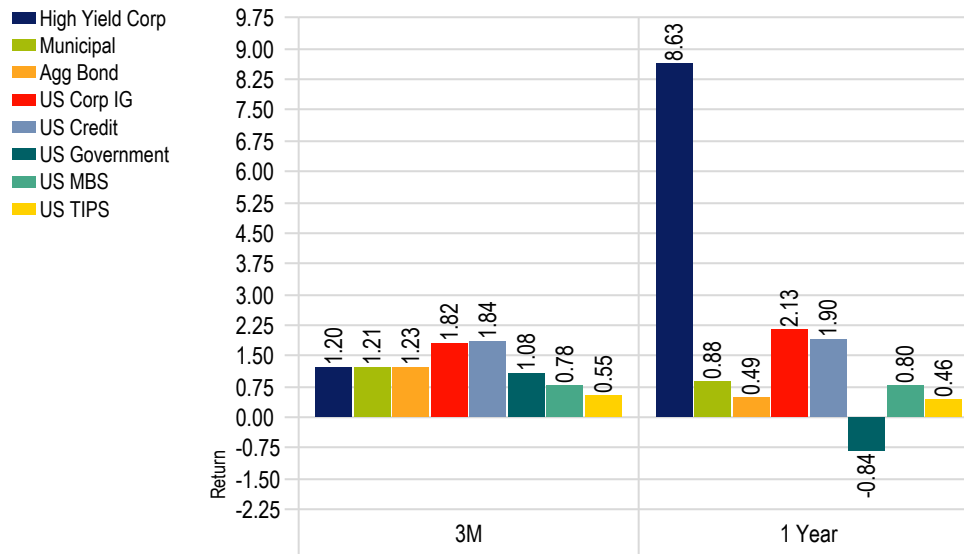
### Bond Index Duration

As of Date: 8/31/2017



### Bond Index Sectors

As of Date: 8/31/2017



### Bond Index Sectors

Data Point: Return

	1M	3M	YTD	1 Year	3 Years	5 Years	10 Years
High Yield Corp	-0.04	1.20	6.05	8.63	4.77	6.47	8.02
Municipal	0.76	1.21	5.20	0.88	3.40	3.23	4.73
Agg Bond	0.90	1.23	3.64	0.49	2.64	2.19	4.40
US Corp IG	0.78	1.82	5.37	2.13	3.66	3.64	5.84
US Credit	0.84	1.84	5.31	1.90	3.46	3.40	5.65
US Government	1.06	1.08	3.12	-0.84	2.12	1.37	3.76
US MBS	0.73	0.78	2.55	0.80	2.46	2.05	4.24
US TIPS	1.06	0.55	2.38	0.46	0.98	0.25	4.11

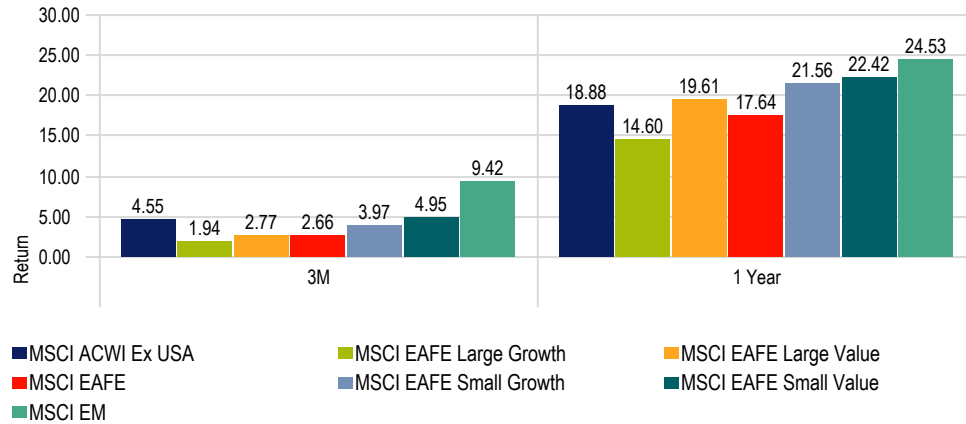
# Market Overview

As of 8/31/2017

## International Snapshot

### Int'l Markets

As of Date: 8/31/2017



### Int'l Markets

Data Point: Return

	1M	3M	YTD	1 Year	3 Years	5 Years	10 Years
MSCI ACWI Ex USA	0.52	4.55	18.92	18.88	2.36	7.36	1.74
MSCI EAFE Large Growth	0.50	1.94	19.73	14.60	4.01	8.62	2.57
MSCI EAFE Large Value	-0.82	2.77	13.30	19.61	0.12	7.06	0.22
MSCI EAFE	-0.04	2.66	17.05	17.64	2.83	8.48	1.62
MSCI EAFE Small Growth	1.25	3.97	23.90	21.56	9.15	12.75	4.77
MSCI EAFE Small Value	0.39	4.95	20.09	22.42	6.96	13.70	4.31
MSCI EM	2.23	9.42	28.29	24.53	2.38	5.30	2.43

### Developed Countries

Data Point: Return

	1M	3M	YTD	1 Year	3 Years	5 Years	10 Years
MSCI Australia NR USD	-0.21	7.21	13.50	17.08	-0.93	4.67	3.17
MSCI Austria NR USD	1.57	12.23	46.73	64.57	12.36	11.18	-5.98
MSCI Belgium NR USD	-1.22	3.72	18.13	8.46	6.40	12.24	0.27
MSCI Canada NR USD	0.12	7.26	7.36	12.08	-3.34	2.56	1.52
MSCI Denmark NR USD	3.49	8.96	32.26	15.78	8.18	14.06	7.15
MSCI Finland NR USD	-0.01	1.59	24.43	23.24	4.91	15.54	-1.94
MSCI France NR USD	1.06	2.55	21.62	26.78	4.90	10.22	1.05
MSCI Germany NR USD	0.24	1.02	17.71	19.89	4.23	9.88	2.20
MSCI Greece NR USD	1.14	7.84	31.95	44.07	-34.65	-13.66	-27.05
MSCI Hong Kong NR USD	1.72	6.15	28.23	20.98	7.61	11.66	6.91
MSCI Ireland NR USD	-0.79	-1.94	7.37	5.27	4.79	12.68	-7.67
MSCI Israel NR USD	-14.47	-10.66	-5.71	-19.66	-6.88	1.29	-0.57
MSCI Italy NR USD	1.83	10.80	26.66	36.52	-0.28	7.20	-4.78
MSCI Japan NR USD	-0.05	3.05	12.09	13.69	6.80	10.68	1.72
MSCI Netherlands NR USD	-0.14	5.05	28.04	26.81	10.18	13.81	3.81
MSCI New Zealand NR USD	-2.45	5.72	10.63	-1.77	5.63	10.47	5.12
MSCI Norway NR USD	2.37	13.70	21.04	29.33	-6.17	0.60	-1.16
MSCI Portugal NR USD	5.04	4.25	23.57	20.28	-3.46	0.71	-7.76
MSCI Singapore NR USD	-0.70	5.72	24.82	22.26	-0.18	3.01	3.55
MSCI Spain NR USD	-1.21	1.96	28.03	32.75	-1.68	9.17	-0.86
MSCI Sweden NR USD	1.53	3.18	21.64	23.07	3.06	7.87	3.49
MSCI Switzerland NR USD	-0.86	-0.17	18.05	14.40	2.41	9.71	4.73
MSCI United Kingdom NR USD	-0.77	-0.18	11.97	12.09	-2.09	4.71	0.77
MSCI USA NR USD	0.25	2.85	11.67	15.52	8.68	13.57	6.99

Source: Morningstar Direct